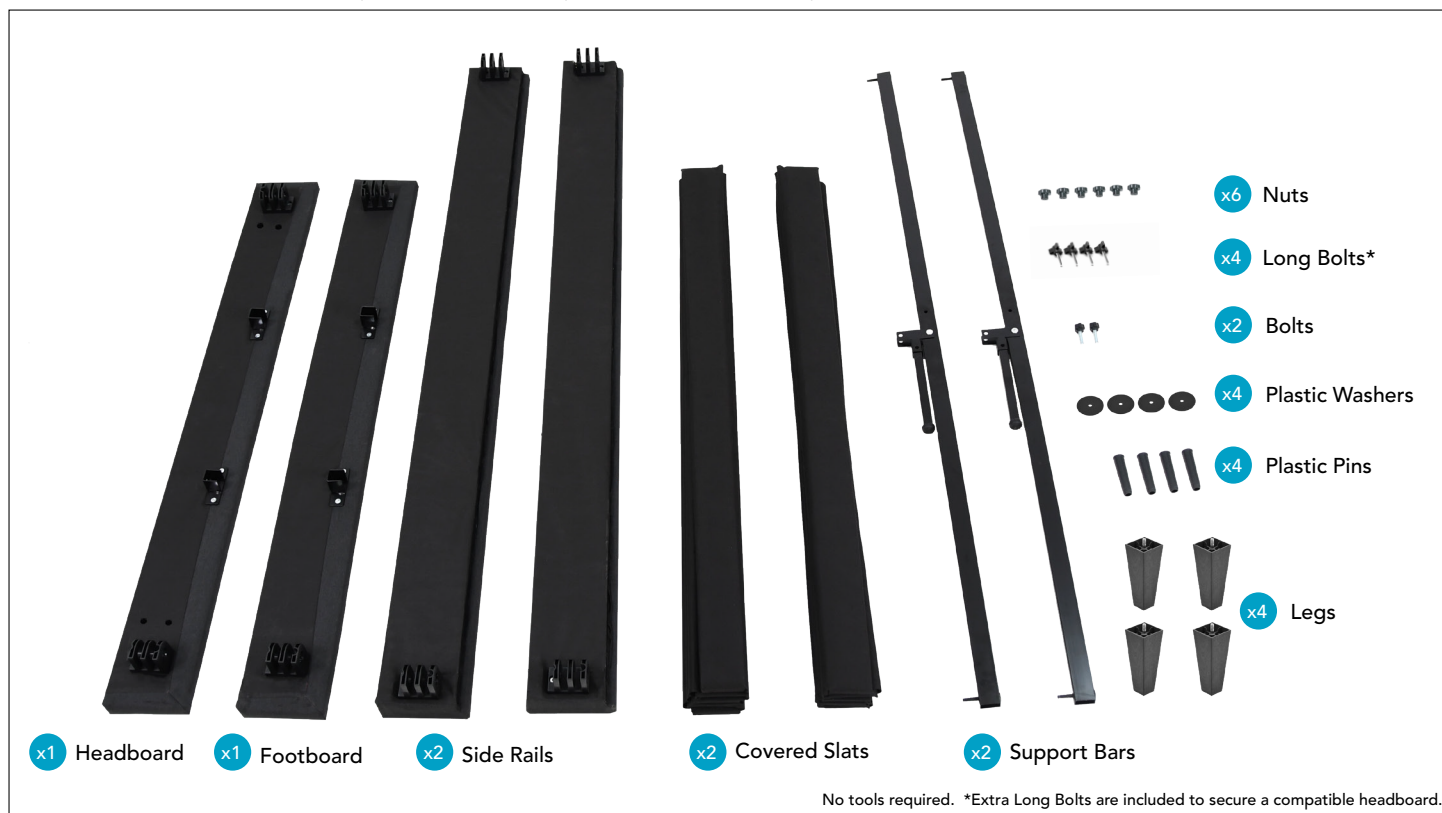
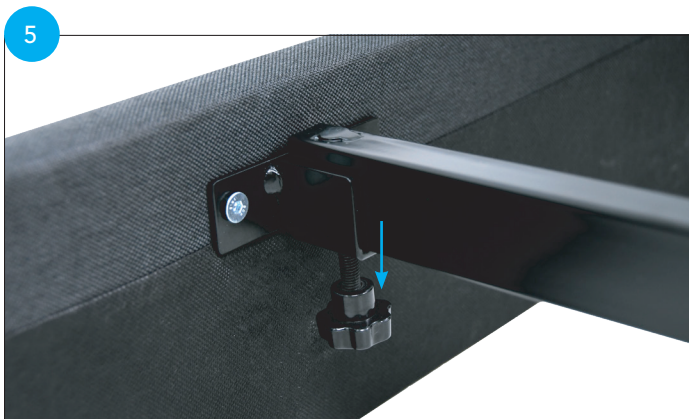


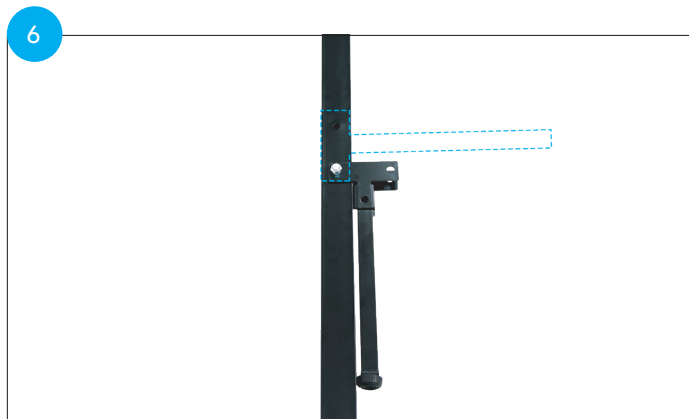
EXPRESS FOUNDATION ASSEMBLY GUIDE

Please read all instructions and safety information carefully before use and assembly.

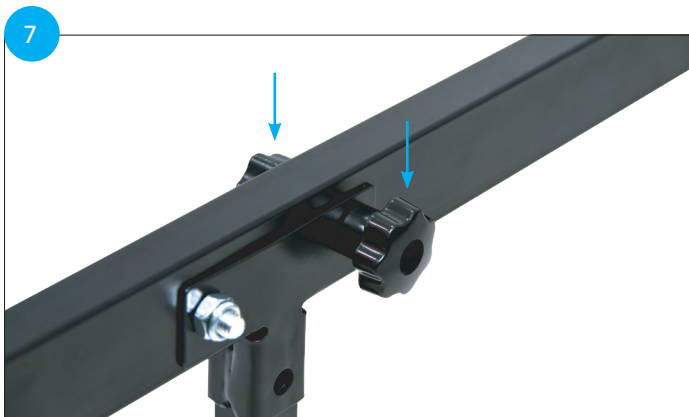




Secure each bolt on the support bar with a plastic nut.



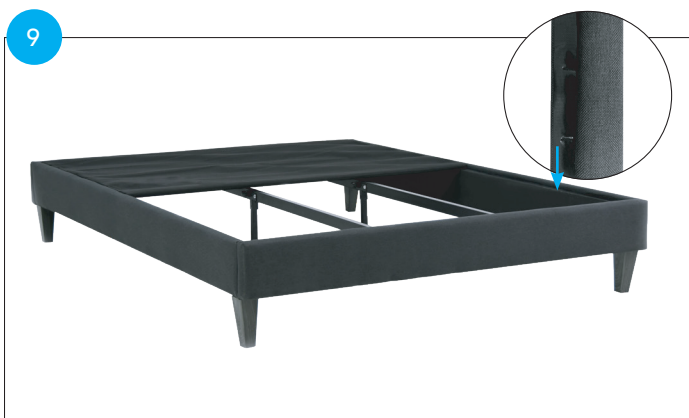
Rotate the middle legs out and align the holes.



Secure each leg with a plastic nut and bolt.



Adjust the pad of each leg to the ground for proper support.



Place the covered slats on the frame; secure the slats with the hook and loop fastening strips.



Add a mattress and enjoy!